



SF-SLOPE™ 35

Segmental Retaining Wall System



Strength ♦ Beauty ♦ Versatility

SF-SLOPE™ 35

The True Interlocking Retaining Wall System

SF-Slope™ 35 is the one wall that does it all. A self-supporting, structurally engineered segmental gravity retaining wall system, SF-Slope™ 35 requires no mortar, pins or steel reinforcement and may be used with or without geogrid. SF-Slope™ 35 offers designers *strength, beauty* and *versatility* in a single unit.

The SF-Slope™ 35 is a true interlocking wall system that allows for minimum excavation and backfills on walls from 2 to 42 feet high, yet provides superior structural stability. Extensive engineering and testing data support this unique system. SF-Slope™ 35 applications world-wide have demonstrated proven capability to safely withstand tremendous load pressures, even in earthquake-prone areas.

Easy to install, durable and maintenance-free, SF-Slope™ 35 is an attractive, economical and cost-effective solution for embankments and erosion-control applications. SF-Slope™ 35 is a high-quality precast concrete unit manufactured to meet ASTM industry standards and offers long-term performance and value. Made with natural materials such as sand, aggregate and Portland Cement, SF-Slope™ 35 will not harm the environment.





SF-SLOPE™ 35

The True Interlocking Retaining Wall System

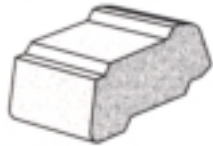
No other segmental retaining wall system available today matches the versatility and beauty of SF-Slope™ 35. With a single stone size, architects, engineers, contractors and developers can create straight, free-form and convex or concave curve designs to suit any project, terrain and landscape requirements.

In addition, the designer may choose from a variety of assembly options including open, closed, alternating, or a combination of custom configurations. With SF-Slope™ 35, you can design and construct terraces, tiers, planters and traditional retaining walls for residential, commercial or municipal applications.

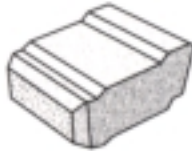
SF-Slope™ 35 offers a choice of two surface finishes - a smooth, contemporary face for a clean geometric line and a richly textured split-face for a traditional natural stone appearance. You can even combine the finishes for a dramatic custom look. Each SF-Slope™ 35, whether split-face or smooth, can also be turned around for a completely different style. And, unlike most other retaining walls, the SF-Slope™ 35 allows for the planting of flowers, vines or other greenery to beautify the environment and further enhance the sound attenuating features of this retaining wall system.



TECHNICAL DATA



SF-SLOPE™ 35
Smooth face unit



SF-SLOPE™ 35
Textured split-face unit

Width of Face	11.8"	(30 cm)
Height of Face	5.5"	(14 cm)
Length/Depth	15.0"	(38 cm)
Weight	75 lbs	(35 kg)

Meets ASTM*	C 140
Min. Compressive Strength	4,000 psi
Max. Water Absorption	5%

Please note: The actual dimensions of SF-SLOPE™ 35 may vary by region. For actual sizes and color availability in your area, contact your local manufacturer.

CURVED WALLS



CONCAVE WALLS

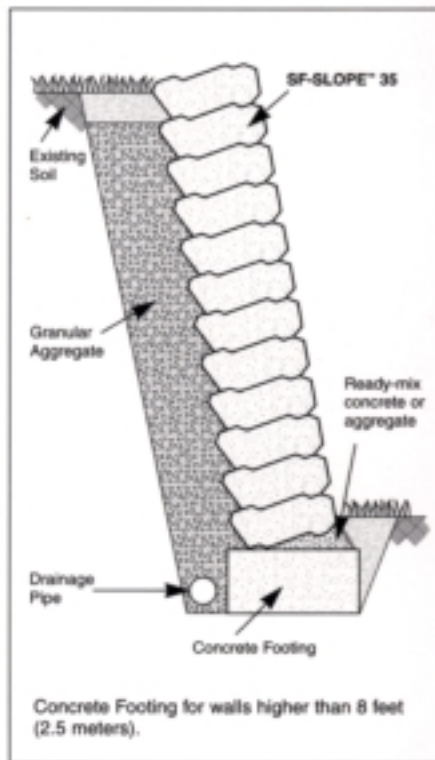
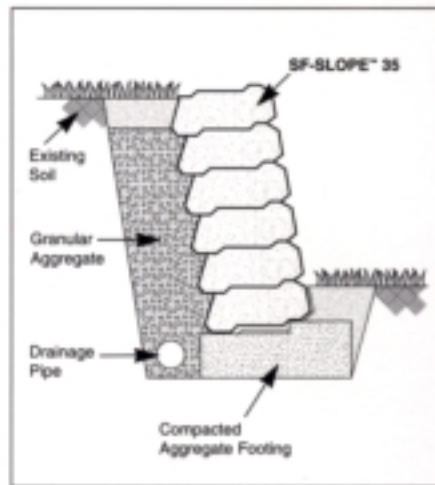
Units on the bottom row should be set close to each other with minimal gaps. While installing, the gaps between the units should increase row by row to a maximum of 6". Minimum radius of the bottom row is 8'.



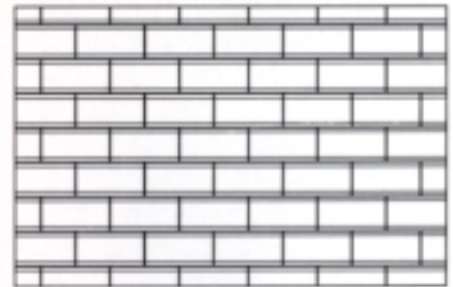
CONVEX WALLS

Units on the bottom row should be set with gaps of 6". While installing, the gaps between the units should be decreased row by row. Minimum radius at the top of the row is 8'.

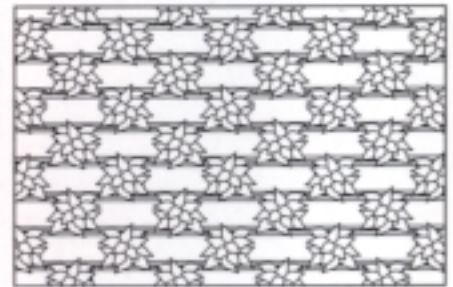
TYPICAL CROSS SECTIONS



ASSEMBLY OPTIONS

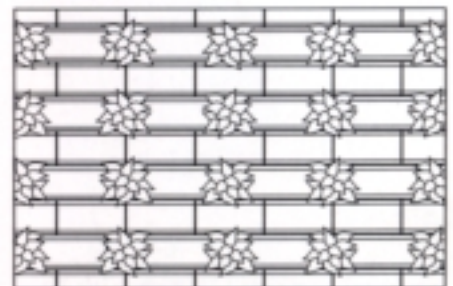


CLOSED ASSEMBLY



OPEN ASSEMBLY

Ratio of unit to plantable opening is 1:1.



ALTERNATING ASSEMBLY


Ratio of unit to plantable opening with one row open and one row closed is 1:1.

All technical details on this brochure are for illustrative purposes only. Walls over 4' high must be designed by a licensed structural engineer. Consult your local building department for specific requirements and height limitations.

For complete technical information, research data, specifications and design software, contact your local SF-SLOPE™ 35 manufacturer.

*SF-Slope™ 35 has been submitted for testing to meet the new ASTM C 1327 Standard Specification for Segmental Retaining Wall Units.

U.S. Patent 4,786,606 Can. Patent L245,870
© 1997 SF Concrete Technology, Inc.

 and SF-SLOPE™ 35 are trademarks of SF Concrete Technology, Inc. Mississauga, Ontario, Canada