



SF-Rima - Project Report # 36

Project:

Sacred Heart Medical Park
1549 Airport Boulevard
Pensacola, FL

approx. 25,000 sq.ft. SF-Rima® paving stones



As reported by the Greenhut Construction Company, Pensacola, the reason for choosing the **SF-Rima® permeable pavement system** at this location was the need to reduce retention pond requirements.

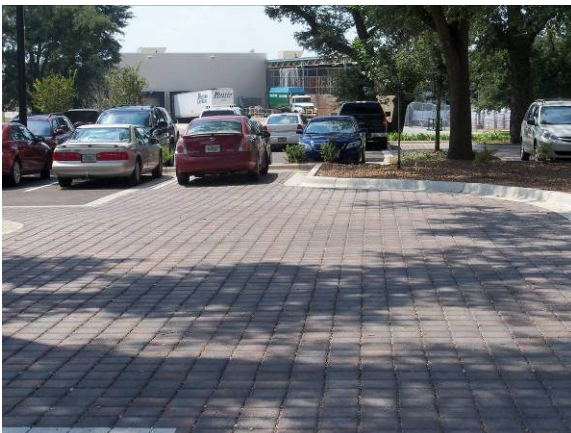
SF-Rima® pavements eliminate runoff from frequent, low intensity and short rainstorms.

Rain water passes through joints between the pavers, through aggregate layers for temporary storage, filtering, treatment and eventually it is released to the ground water. Lifetime infiltration rates on maintained **SF-Rima® pavements** are expected to be in excess of 3.8 inches per hour.



Sacred Heart Medical Park provides outpatient diagnostic services and physicians' offices in a single location outside the hospital setting.

It provides advanced medical technology, MRI and the latest in high speed CT imaging and an outpatient wound care center offering hyperbaric oxygen therapy.



General Contractor:

Greenhut Construction Company, Pensacola, FL

Installer: Wallace Hardscapes, Pensacola, FL

SF-Rima® manufacturer: Block USA

Photo courtesy:

Jeff Gamel, Hardscapes USA

This document was created with Win2PDF available at <http://www.win2pdf.com>.
The unregistered version of Win2PDF is for evaluation or non-commercial use only.
This page will not be added after purchasing Win2PDF.